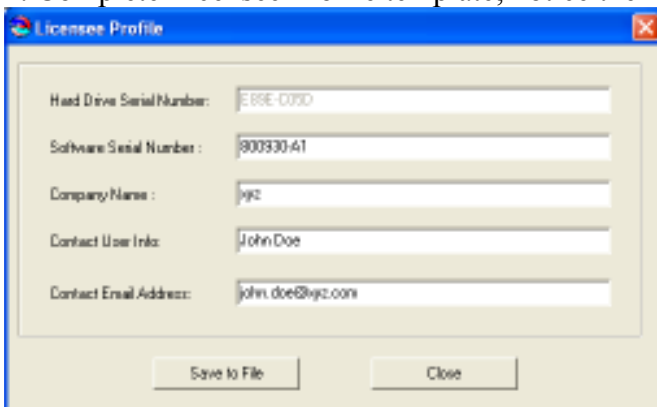


1. Open DPC Manager using desktop shortcut. On the resulting screen, click on the left hand button labeled “Manage DPC Calibration/Configuration Data”. Then click on “Licensing” in toolbar and select the “Gather Licensee Profile for Registration” option.



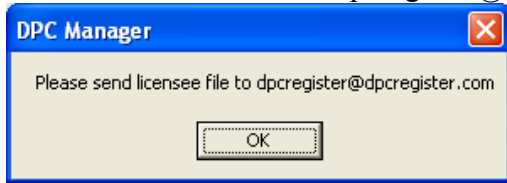
2. Complete Licensee Profile template; notice the hard drive sn is retrieved automatically.



3. ... and click the “Save to File”. Save it in a directory that you can easily find.

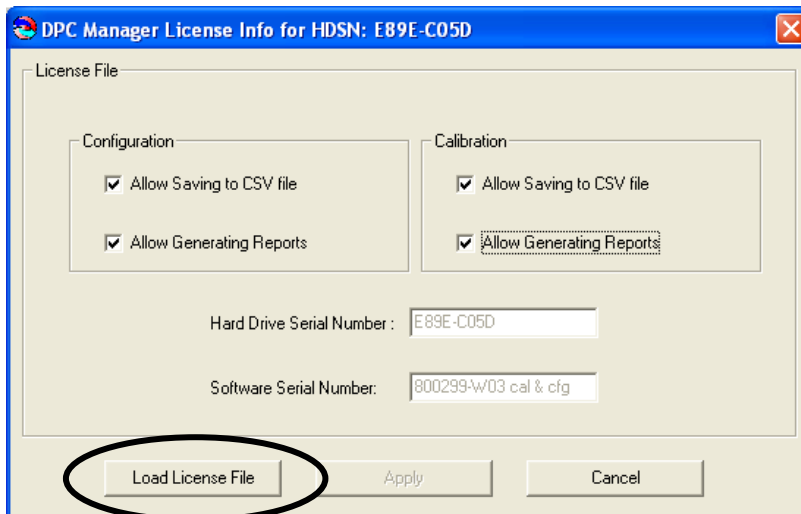


4. Email the saved file to dpcregister@dpcregister.com



5. A license file for the purchase features will be returned by email. Save the license file onto the host PC in a directory that you can easily locate.

6. Click on “Licensing” in the DPC Manager main tool bar (see page one of this instruction) and select “Load license file to activate software features” option from drop down menu



7. Clicking on “Load License File” button and use the resulting browser to find the license file location.

8. Click “Apply” to finish licensing DPC Manager 4.x Manage DPC Calibration/ Configuration Data

